

Compliance Document for New Zealand Building Code Clause G2 Laundering

Prepared by the Department of Building and Housing

This Compliance Document is prepared by the Department of Building and Housing. The Department of Building and Housing is a Government Department established under the State Sector Act 1988.

Enquiries about the content of this document should be directed to:



Department of
Building and Housing

Te Tari Kaupapa Whare

Department of Building and Housing
PO Box 10-729, Wellington.
Telephone 0800 242 243
Fax 04 494 0290
Email: info@dbh.govt.nz



Sales enquiries should be directed to:
Customer Services,
Victoria University Book Centre
PO Box 12-337, Wellington, New Zealand
Telephone 0800 370 370, (04) 463 5511
Fax (04) 463 5510
Email: dbh@vicbooks.co.nz
www.vicbooks.co.nz
ISBN 0-477-01606-5

© Department of Building and Housing 2006

This Compliance Document is protected by Crown copyright, unless indicated otherwise. The Department of Building and Housing administers the copyright in this document. You may use and reproduce this document for your personal use or for the purposes of your business provided you reproduce the document accurately and not in an inappropriate or misleading context. You may not distribute this document to others or reproduce it for sale or profit.

The Department of Building and Housing owns or has licences to use all images and trademarks in this document. You must not use or reproduce images and trademarks featured in this document for any purpose (except as part of an accurate reproduction of this document) unless you first obtain the written permission of the Department of Building and Housing.

Status of Compliance Documents

Compliance Documents are prepared by the Department of Building and Housing in accordance with section 22 of the Building Act 2004. A Compliance Document is for use in establishing compliance with the New Zealand Building Code.

A person who complies with a Compliance Document will be treated as having complied with the provisions of the Building Code to which the Compliance Document relates. However, a Compliance Document is only one method of complying with the Building Code. There may be alternative ways to comply.

Users should make themselves familiar with the preface to the New Zealand Building Code Handbook, which describes the status of Compliance Documents and explains alternative methods of achieving compliance.

Defined words (italicised in the text) and classified uses are explained in Clauses A1 of the Building Code and in the Definitions at the start of this Compliance Document.

G2: Document History		
	Date	Alterations
First published	July 1992	
Amendment 1	1 July 2001	p. 2, Document History, Status p. 9, Definitions
Note: Page numbers relate to the document at the time of Amendment and may not match page numbers in current document.		

Document Status

The most recent version of this document, as detailed in the Document History, is approved by the Chief Executive of the Department of Building and Housing. It is effective from 1 July 2001 and supersedes all previous versions of this document.

People using this Compliance Document should check for amendments on a regular basis. The Department of Building and Housing may amend any part of any Compliance Document at any time. Up-to-date versions of Compliance Documents are available from www.dbh.govt.nz

New Zealand Building Code

Clause G2 Laundering

This Clause is extracted from the New Zealand Building Code contained in the First Schedule of the Building Regulations 1992.

1992/150	<i>Building Regulations 1992</i>	55
FIRST SCHEDULE—continued		
Clause G2—LAUNDERING		
Provisions	Limits on application	
OBJECTIVE		
<p>G2.1 The objective of this provision is to ensure:</p> <p>(a) <i>Adequate amenities</i> for people to do laundering, and</p> <p>(b) That <i>people with disabilities</i> are able to carry out normal activities and processes within <i>buildings</i>.</p>		
<p>Objective G2.1 (b) shall apply to those <i>buildings</i> to which section 25 of the Disabled Persons Community Welfare 1975 Act applies.</p>		
FUNCTIONAL REQUIREMENT		
<p>G2.2 <i>Buildings</i> shall be provided with <i>adequate</i> space and facilities for laundering.</p>		
<p>Requirement G2.2 shall apply only to <i>Housing</i>, old people's homes, early childhood centres, camping grounds and work camps.</p>		
PERFORMANCE		
<p>G2.3.1 Facilities shall have capacity for the <i>intended use</i>, and consist of <i>fixtures</i>, or space and services for appliances.</p>		
<p>G2.3.2 Space shall be <i>adequate</i> in size to provide for the installation and use of <i>fixtures</i> or appliances.</p>		
<p>G2.3.3 Space and facilities shall be provided within each accommodation unit or may be grouped elsewhere in a convenient location.</p>		
<p>G2.3.4 <i>Accessible</i> facilities shall be provided for <i>people with disabilities</i>.</p>		
<p>Performance G2.3.4 shall apply only to camping grounds.</p>		

Contents

	Page
References	7
Definitions	9
Verification Method G2/VM1	11
Acceptable Solution G2/AS1	13
1.0 Laundering Facilities	13
1.1 Service connections	13
1.2 Accessibility	13
1.3 Number of facilities	14
Index	15

References

For the purposes of New Zealand Building Code compliance, referenced documents shall be deemed to include any amendments issued prior to the date of the Approved Document as displayed at the foot of the page on which the references are listed.

Standards Association of Australia

AS 1229: 1989 Laundry troughs

Where quoted

AS1 1.0.3

Definitions

This is an abbreviated list of definitions for words or terms particularly relevant to this Approved Document. The definitions for any other italicised words may be found in the New Zealand Building Code Handbook.

Accessible Having features to permit use by *people with disabilities*.

Adequate *Adequate* to achieve the objectives of the *building code*.

Amenity An attribute of a *building* which contributes to the health, physical independence, and well being of the *building's* users but which is not associated with disease or a specific illness.

Building has the meaning ascribed to it by the Building Act 1991.

Discharge pipe Any pipe which is intended to convey discharge from *sanitary fixtures* or *sanitary appliances* and includes a *waste pipe, combined waste pipe, branch discharge pipe* and *discharge stack*.

Fixture An article intended to remain permanently attached to and form part of a *building*.

Intended use of a *building* includes:

- a) Any reasonably foreseeable occasional other use that is not incompatible with the intended use; and
- b) Normal maintenance; and
- c) Activities taken in response to *fire* or any other reasonably foreseeable emergency – but does not include any other maintenance and repairs or rebuilding.

People with disabilities means any *person* who suffers from physical or mental disability to such a degree that he or she is seriously limited in the extent to which he or she can engage in the activities, pursuits, and the processes of everyday life.

Socket outlet An accessory fixed to a wall or ceiling and designed to accept a plug that extends the electrical supply to an appliance by means of a flexible cable.

Water seal The depth of water that can be retained in a *water trap*.

Water trap A fitting designed to retain a depth of water that prevents foul air and gases escaping from the *plumbing system* or *foul water drainage system* and entering a *building*.

Amend 1
Jul 2001

Amend 1
Jul 2001

Verification Method G2/VM1

No specific test methods have been adopted for verifying compliance with the Performance of NZBC G2.

Acceptable Solution G2/AS1

1.0 Laundering Facilities

1.0.1 Laundering facilities shall be provided with:

- a) A laundry tub, or
- b) Space and service connections for a washing machine.

1.0.2 A laundry tub shall:

- a) Have a capacity to spill-level of no less than 35 litres, and
- b) Be capable of fully containing a solid cylinder of 400 mm diameter and 200 mm depth.

COMMENT:

This provision allows for the filling or washing of containers such as buckets.

1.0.3 Alternative solution

Laundering tubs complying with AS 1229 are acceptable, but exceed the requirements given in Paragraph 1.0.2.

1.1 Service connections

1.1.1 A tub shall be provided with a cold water supply.

1.1.2 Space provided for a washing machine shall have a cold water supply, a discharge pipe, a water trap, and an adjacent 10 amp socket outlet.

1.1.3 Plumbing and drainage for waste water from the tub and washing machine discharge pipe shall be provided as required by NZBC G13 "Foul Water".

COMMENT:

NZBC G9 "Electricity", G12 "Water Supply", and G13 "Foul Water" are also relevant to laundering facilities.

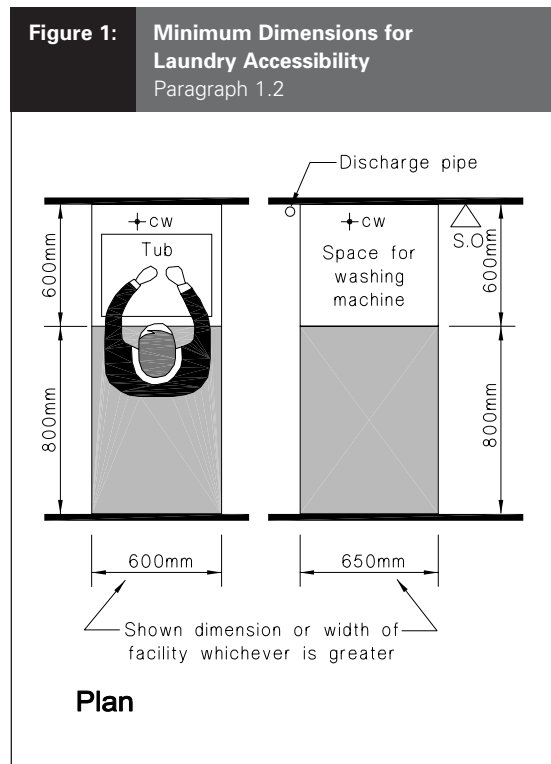
1.2 Accessibility

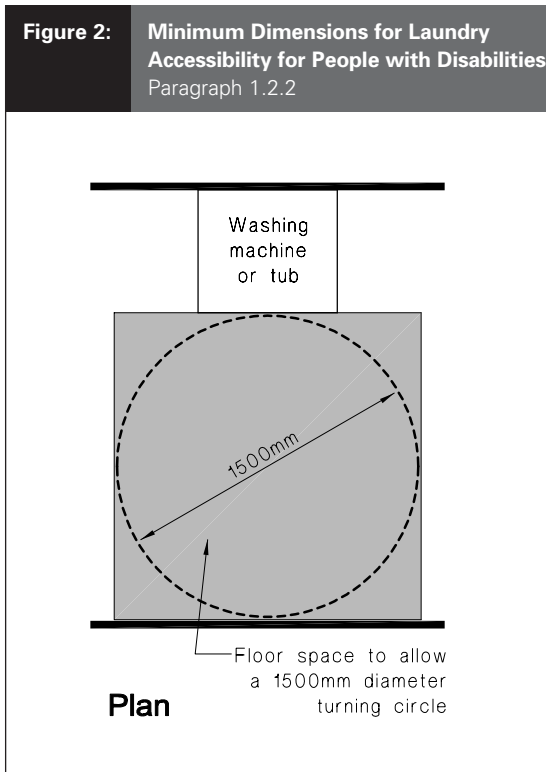
1.2.1 Laundry floor space shall be no less than shown in Figure 1.

1.2.2 Where laundry facilities are intended for people with disabilities, space to allow a turning circle of 1500 mm shall be provided in front of the laundry tub or washing machine, as shown in Figure 2.

COMMENT:

The washing machine space dimensions allow for a range of popular machines. Designers should check current models and increase the size if necessary.





1.3 Number of facilities

1.3.1 Laundering facilities shall be provided according to the number of people being serviced. Acceptable provisions are shown in Table 1.

Table 1: Provision of Laundering Facilities
Paragraph 1.3.1

Defined use	Number required
Detached dwelling or separate <i>household unit</i> to accommodate no more than 2 people	Nil
Detached dwelling or separate <i>household unit</i> to accommodate 3 or more people, and early childhood centres	1
Group dwelling, old people's homes, and work camps	1 per 20 people
Multi-unit dwellings (common laundry space)	1 per 4 dwelling units
Camping grounds	1 per 70 people

Index G2/VM1 & AS1

All references to Verification Methods and Acceptable Solutions are preceded by **VM** or **AS** respectively.

Laundries	AS1 1.0
alternative solution	AS1 1.0.3
capacity	AS1 1.0.2 a)
electricity supply	AS1 1.1.2
minimum dimensions	AS1 1.2.1, Figure 1
number of facilities	AS1 1.3.1, Table 1
size	AS1 1.0.2 b)
tubs	AS1 1.0.1 a), 1.0.2, 1.1.1
washing machines	AS1 1.0.1 b), 1.1.2
water supply	AS1 1.1.1, 1.2
People with disabilities	AS1 1.2.2, Figure 2

